

EBAV AIRFIELD HANDBOOK



HANDBOOK CONTENTS

A/ Board

B/ Safety Management

C/ Location

C1 Roadmap

C2 Streetmap

C3 Low Air Chart

C4 Runway and Infrastructure

photo 1: runway orientation,

photo 2: runway

photo 3: reference points

photo 4: infrastructure)

D/ Description of the ulmodrome

E/ Circuits

F/ Emergencies

F1 Telephone numbers

F2 Forced Landing : what to do ?

F3 Fire: what to do ?

F4 Location of fire extinguishers

G/ Official documents (procedures and report)

H/ Memorandum of understanding MoU concerning EBD37

I/ Precautions due to:

- presence of wind turbines
- a public road crossing the runway

J/ Remember – PPC – Diverting Possibilities

A/ BOARD

The aeroclub is based on a ASBL / VZW structure

The board is chosen by the club members. Board members are appointed for a 3 year period.

President

Dominic Morrenne
Rue Désiré Streel 5A
4280 Hannut
+32.495.61.66.77
do@morrenne.be

Vice-President

Filip Lowette
Trolieberg 107
3010 Leuven
+32.475.44.87.19
flow@lowette.be

Secretary - treasurer

Jaak Kerkhofs
Bommershovenstraat 18
3840 Borgloon
+32.476.60.85.24
jaak.kerkhofs@gmail.com

Member

François Persoons
Au long Pré 7
4053 Embourg
Mobile: +32.495.441.661
francois.persoons@skynet.be

Member

Emile Vangesselen
Rue de la Vallée 5
4280 Hannut
+32.498.10.69.76
emile.vangesselen@gmail.com

Member

Alain Vandavelde
Rue Pierre Renard 51
1350 Noduzwez
+32.475.49.52.24
alainvdelde@skynet.be

Consultant

Danny Van den Meersschaut
Rue Neuville 5
4219 Ambresin
+32.476.60.85.24
zoof@skynet.be

B/ SAFETY MANAGEMENT AEROCLUB de HESBAYE ASBL/VZW.

OPERATOR

Dominic Morrenne
Rue Désiré Streel 5A
4280 Hannut
+32.495.61.66.77
do@morrenne.be

CHIEF AIRFIELD COMMANDER

Philippe Hendrickx
+32.497.244.711
philippehendrickx@yahoo.com

Airfield Commander

Tanguy Braeckman
+32.494.82.97.21

Airfield Commander

Eddy Luyckx
+32.496.16.62.62

Airfield Commander

Pierre Hourlay
+32.475.78.45.51

Airfield Commander

François Persoons
+32.495.44.16.61

Airfield Commander

Lucien Claes
+32.496.30.02.62

Airfield Commander

Johnny Cassier
+32.471.97.03.67

Airfield Commander

Michel Corten
+32.479.86.05.19

Airfield Commander

Catherine Gelin
+32.497.33.75.01

Airfield Commander

Xavier de Lange
+32.495.38.27.17

Airfield Commander

Jacques Kerkhofs
+32.476.60.85.24

Airfield Commander

Filip Lowette
+32.475.44.87.19

Airfield Commander

Alain Vandevelde
+32.475.49.52.24

Airfield Commander

Jacques Marin
+32.478.40.47.12

Airfield Commander

Emile Vangesselen
+32.498.10.69.76

Airfield Commander

Steven Leroy
+32.477.45.90.78

Airfield Commander

Loïc Fusini
+32.471.10.57.52

Airfield Commander

Pol Bernaards
+32.477.33.56.22

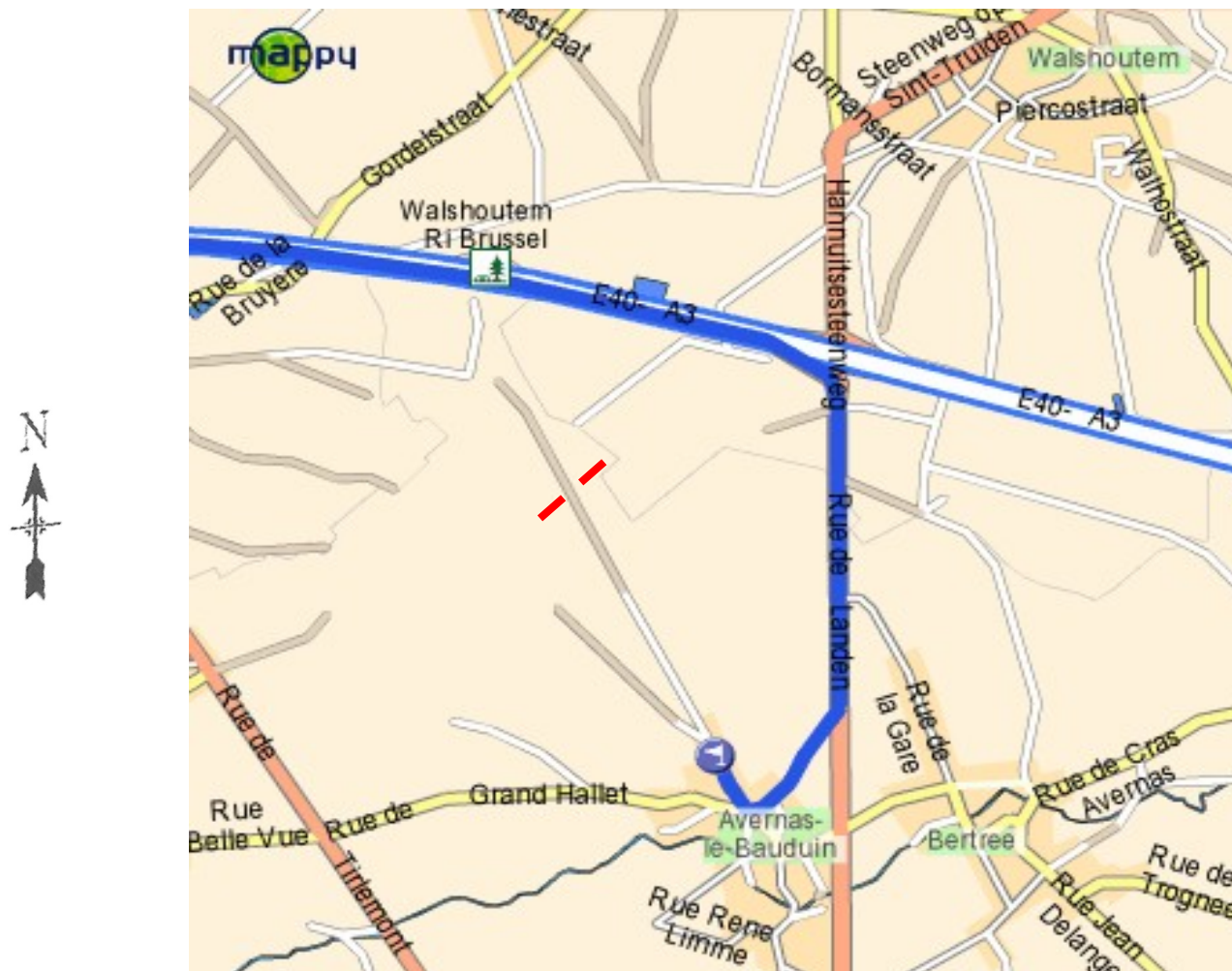
C/ LOCATION

C1/ Roadmap: Location of the runway is right on the borderline of two regions with two different languages. NE of the airfield runway is on the territory of the province of Vlaams Brabant (Dutch speaking part), the runway itself and SW of the runway is on the territory of the province of Liège (French speaking part).



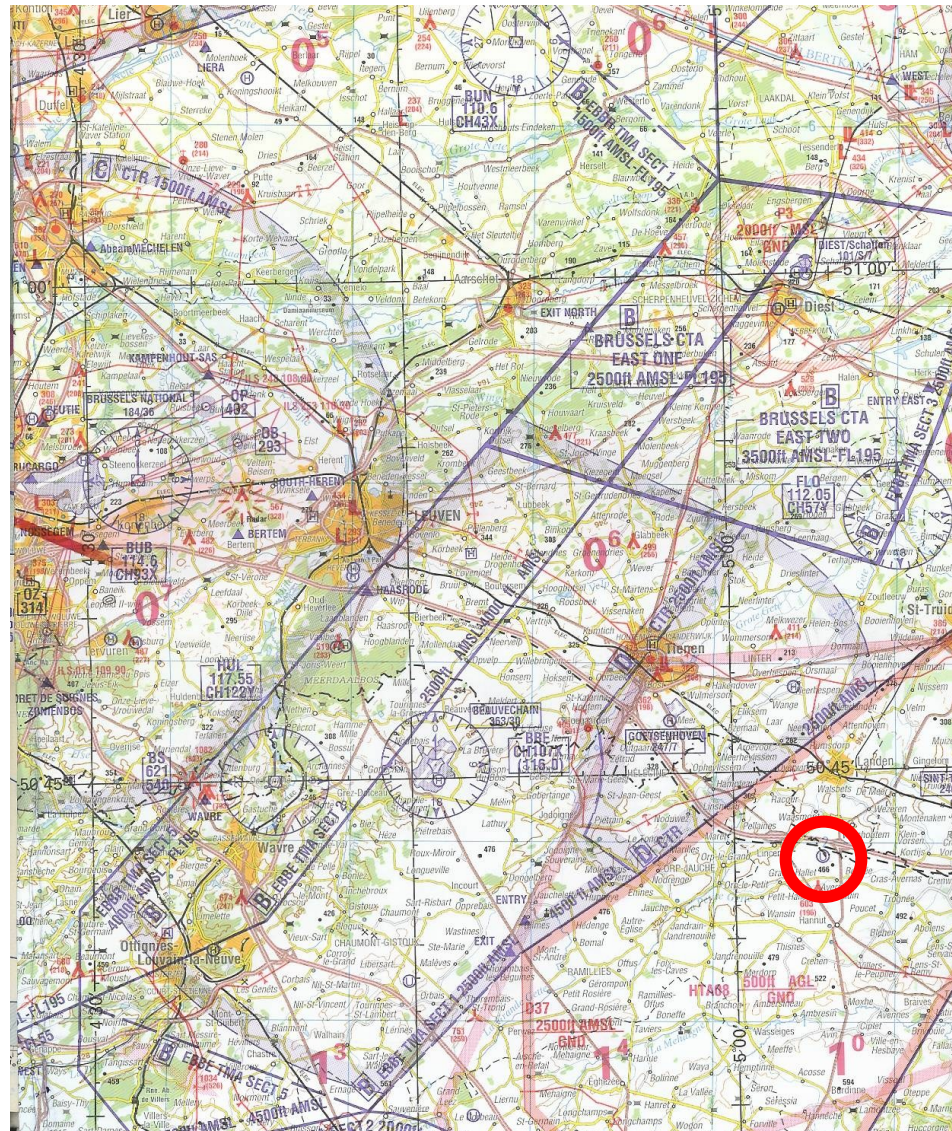
C/ LOCATION

C2/ Streetmap:



C/ LOCATION

C3/ Low Air Map:



C/ LOCATION

C4/ Runways and Infrastructure:



C/ LOCATION

C5/ Runways and Infrastructure :

Runway picture: view from RH downwind RWY 23

The RWY is 05/23 orientated.

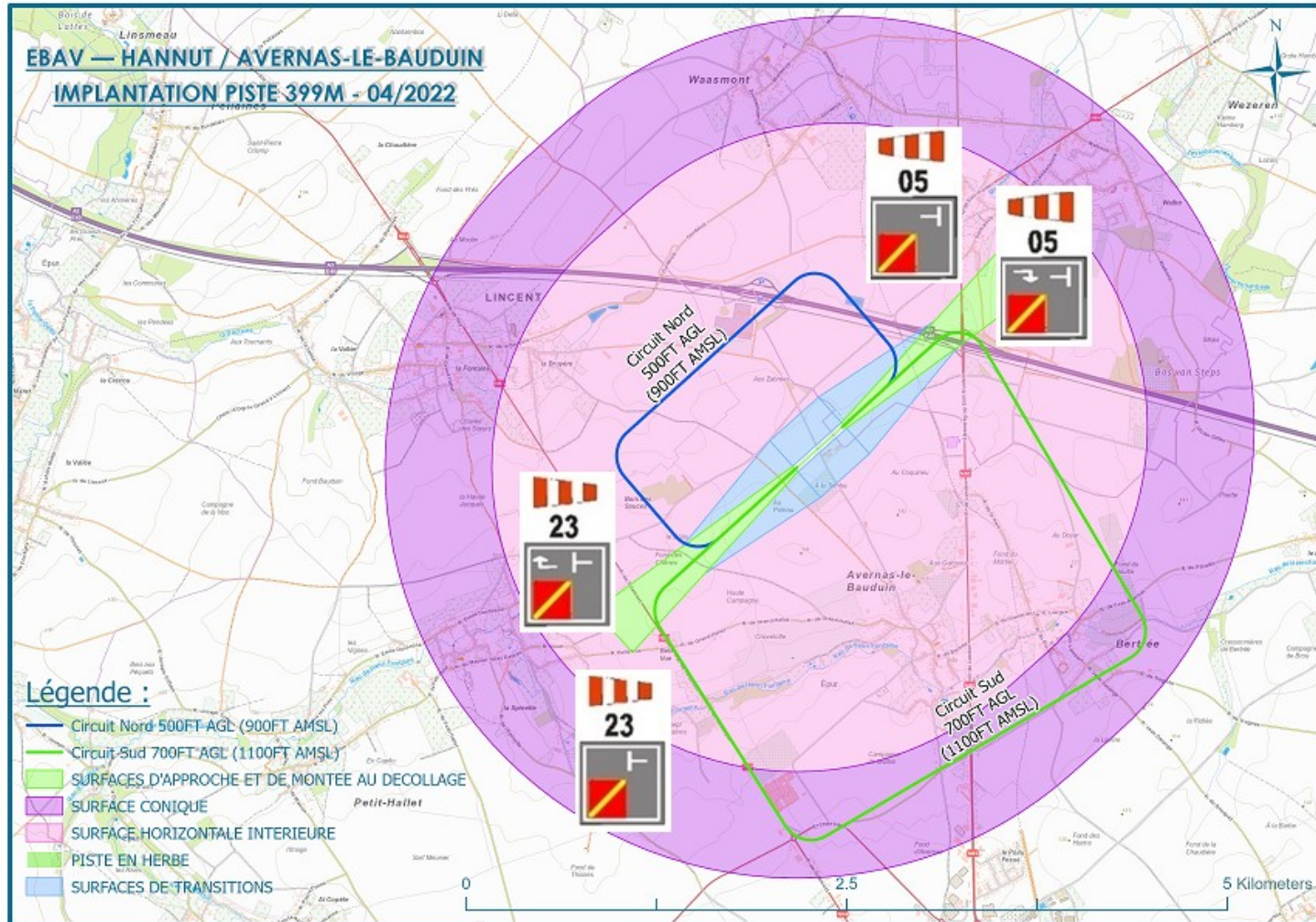
The road crossing the RWY is secured by barriers and traffic lights, operated by the Airfield Commander.



C/ LOCATION

C6/ Runways and Infrastructure :

reference points



C/ LOCATION

C7/ Runway and Infrastructure:

infrastructure



C/ LOCATION

C7/ Runway and Infrastructure: **holding points signs with red light for pilots**



Pilots should position well in front of Holding Point

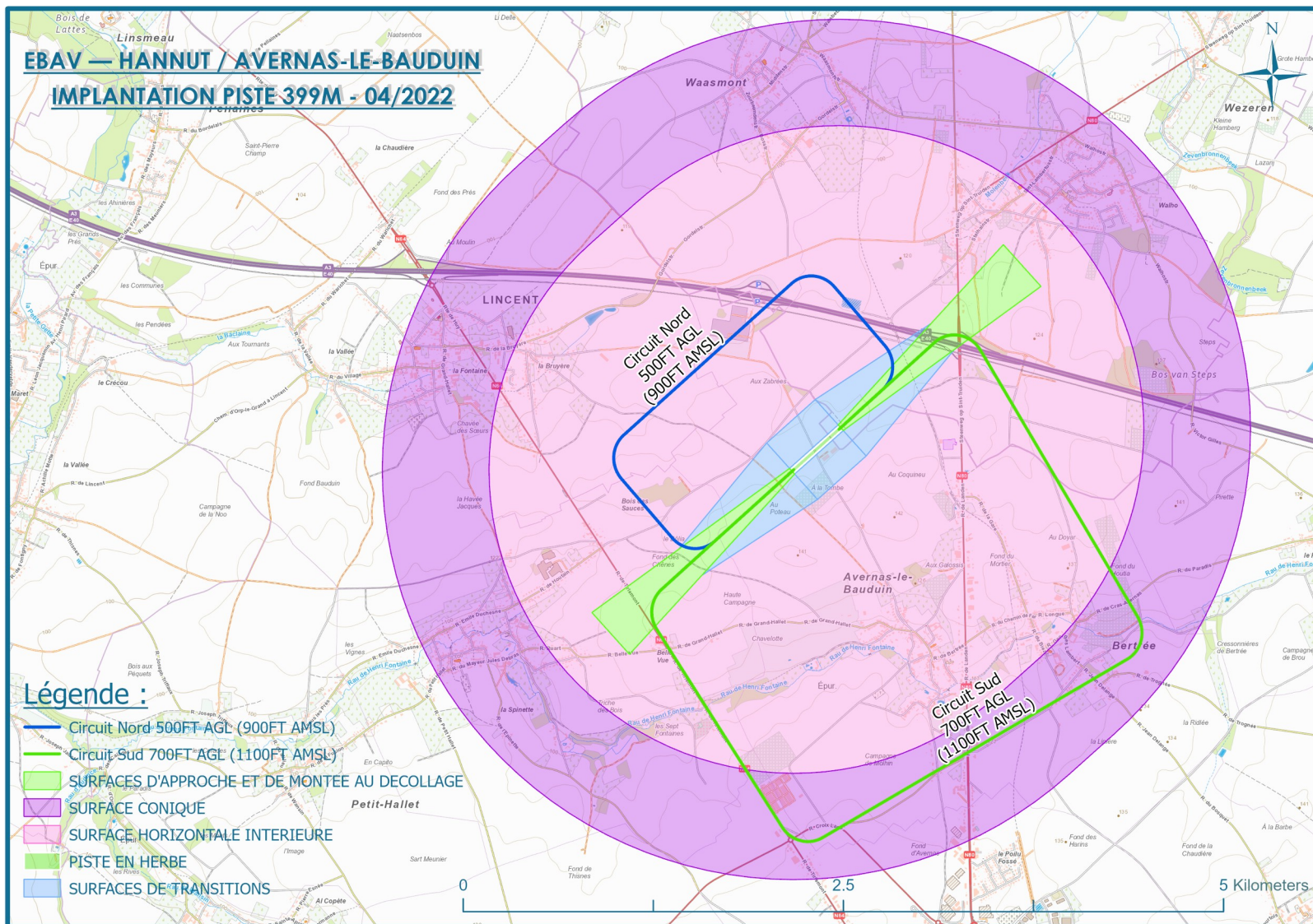
D/ Description of the ulmodrome

Airfield type	ULM platform
Airfield class	class II
Airfield code	EBAV
Elevation	394 ft (124m)
ARP	N50°42'23" E005°04'05"
Runway	30m x 399 m // QFU: 048° /228° // RWY 05/23 // slope: 1,29 % (05 down to 23)_ TODA 560 m
Surface Strength	Grass & 2000 kg
Airspace	Class G : at or below 4500ft AMSL, and until FL 55 excluded when the LFA GOLF 1 is activated.
Location	Inside EBD37 (military training zone) -> Memorandum of understanding (MoU) EBD37
Operational status	7/7 HJ (outside MIL operational HR) PPR (Prior Permission Required)
Flight conditions	VFR only (microlights: visibility 3 km or more)
Activity	ULM & DPM & gyrocopter
Avernas Flight School	Philippe Hendrickx +32(0)497.24.47.11 - Alain Vandevælde +32(0)475.49.52.24 Eddy Luyckx +32(0)496.16.62.62

D/ Description of the ulmodrome

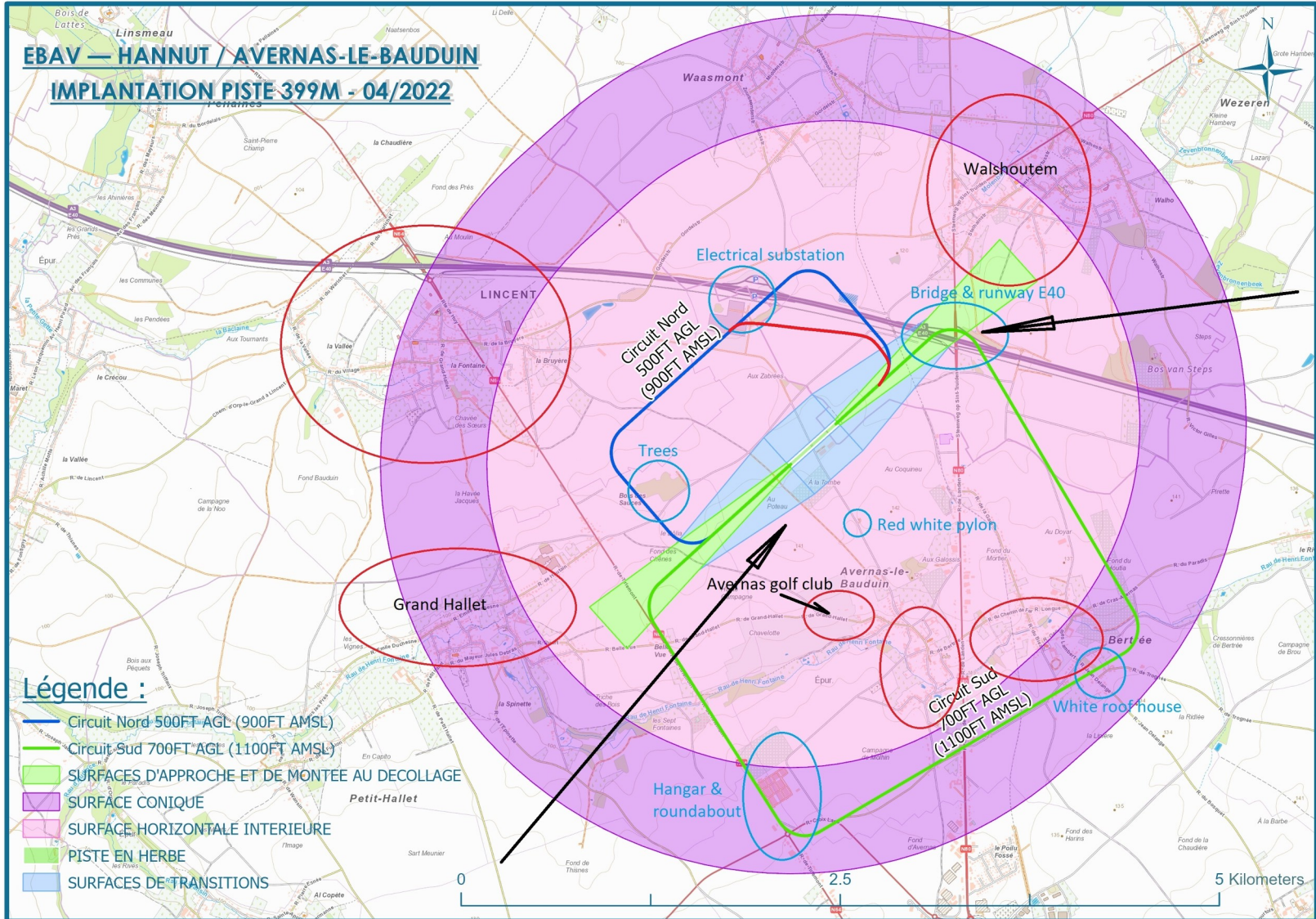
Integration		1/ Overhead signal area at 1200 ft AGL (=1600ft AMSL) 2/ Beginning of downwind	
Circuits			
circuit	West	500 ft AGL (900 ft AMSL) RWY 05 : Left Hand circuit	RWY 23 : Right Hand
circuit	East	700 ft AGL (1100 ft AMSL) RWY 05 : Right Hand circuit	RWY 23 : Left Hand
Taxi		After landing, the runway must be vacated to the southeast and backtrack to the apron. For departure, respect the holding point of the RWY in use. For RWY 05, only proceed beyond the holding point when there is no departing or arriving traffic.	
Fuel & oil		fuel station at 2 km // MOGAS available order when you call PPR	
Repair workshop		no	
Hangars		2	
Aircraft parking		on the apron or inside hangar if available	
Bar & Clubhouse		bar: yes (integrated in hangar) – Meals available – Brasserie ‘Cockpit’ 0495 10 06 37	
Radio		auto info “Avernas Traffic” 129.980 MHz	
Information in “C” office		AIP // NOTAM’s // Flight Register // LAM // Airfield Handbook // Airfield Commander // First aid kit // Incident/Accident Report Form	
“C” office phone number		+32 478 09 74 94	

D/ Description of the ulmodrome



E/ Integration & circuit:

RED line = for ULM & DPM slower than 80 km/h in circuit



F/ EMERGENCIES

F1/ Telephone numbers:

General SMUR Waremmе - MUG ST-Truiden 112
Medical emergency & fire brigade 112 - 100
Police 101
Fire Brigade Hannut +32 19 60 54 20

Aeronautical Rescue Coordination Center +32 2 206 27 22
SAR Koksijde (Heli) +32 58 31 17 14
(coordinates Avernas = 50°42'27"N005°04' 10"E)

Civil Aviation Authorities Brussels

+32 2 .206 32 11 (outside day hours: ACC: +32 2 206 27 11 or +32 2 206 27 22 or +32 2 206 27 23)
Fax = +32 2 203 15 28 or +32 2 206 27 29

Hospitals in the vicinity

Waremmе	16km	14min	+32 19 33 80 00
	Tienen	19km 14min	+32 16 80 30 11
	Mont Légia	36km 23min	+32 43 555 000
	Neder-over-Heembeek	61km 40min	+32 2 264 48 48 (fire injuries)

Doctor on call +32 19 51 47 80

F/ EMERGENCIES

F2/ Forced landings: what to do ?

Forced landing on the platform:

1. Contact Airfield commander
2. Report Civil Aviation Administration < 48u (reporting documents cfr. Chapter G)

Forced Landing inside or outside the Circuit:

1. Contact Airfield Commander
2. Local Police
3. Owner of the field or property
4. Report Civil Aviation Administration within less than 48 hours (reporting documents cfr. Chapter G)

F/ EMERGENCIES

F3/ Fire: what to do ?

Aircraft

1. Contact Airfield Commander
2. Fire alarm
3. Evacuate area
4. Use appropriate fire extinguishers (in safety intervention vehicle).
5. Fire Brigade / Local police
6. Secure wreck
7. Report Civil Aviation Administration within less than 48 hours (in annex cfr Chapter G)

Infrastructures

1. Contact Airfield commander
2. Fire alarm
3. Evacuate area
4. Use fire extinguishers
5. Fire Brigade / Local police

F/ EMERGENCIES

F4/ Location of fire extinguishers:

in the hangars and clubhouse

19 EXTINGUISHERS are spread over both hangars and “C” local and safety intervention car



G/ OFFICIAL DOCUMENTS (procedures and report)

Procedure to follow by the Airfield commander in case of Accident or Incident

&

“Accident / Incident Report”

documents available at the end of the handbook

J/ Remember !



Before arriving at the airfield:

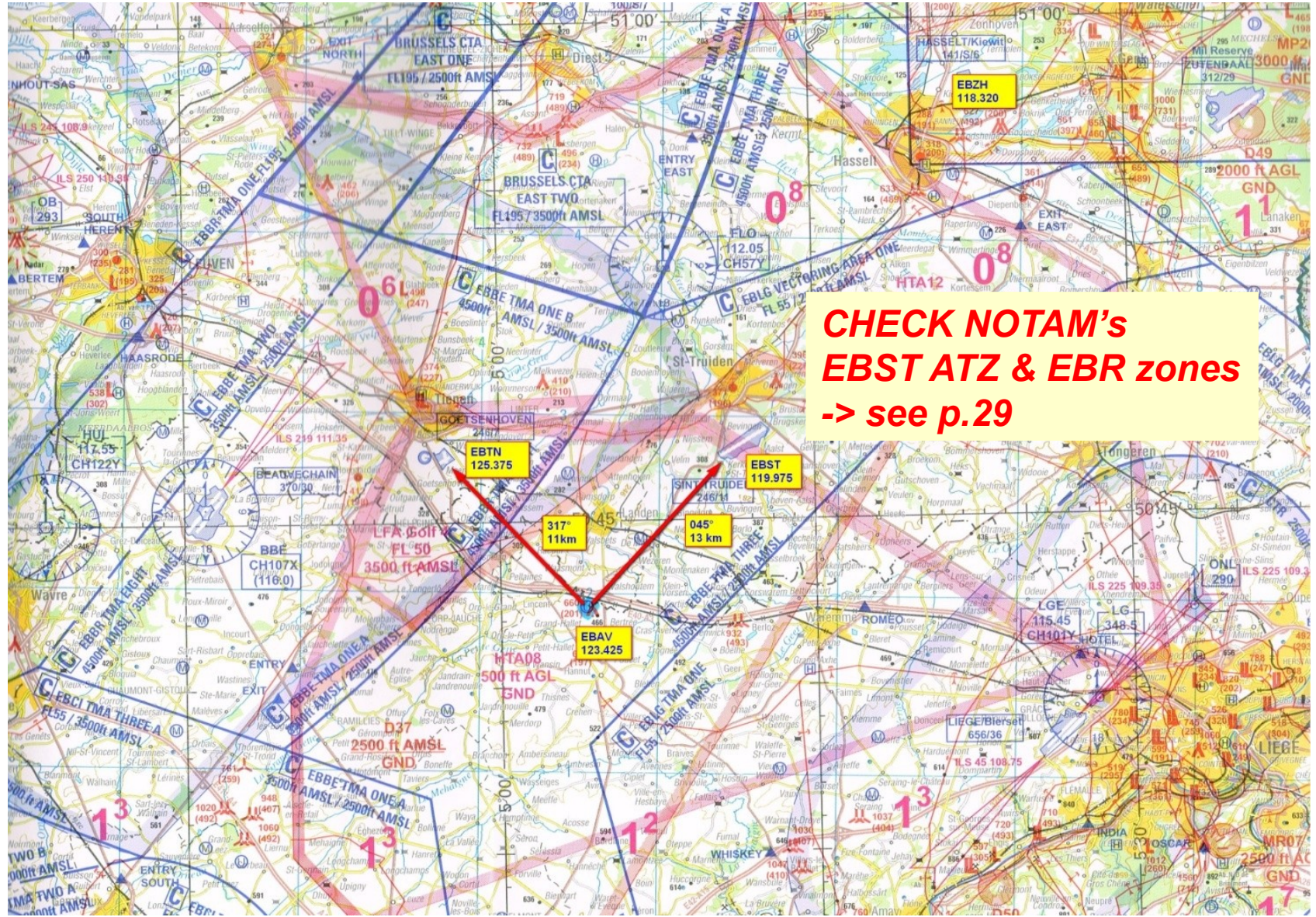
- Don't forget EBAV is a PPR airfield !
- Don't forget your documents:
(*pilot licence - medical - glasses - LAM - navlog - meteo - notam's - plane docs.....*)

At the airfield:

- Visit "C"-local = ARO
- Contact the airfield commander
- Fill in the flight register

J/ Summary Personal Pilot Checklist: alternates

Diversion possibilities:



J/ EBST Aerodrome Traffic Zone & EBR61 -> 73: activated by Notam !

EBST AD 2.17 ATS AIRSPACE

1	Designation	Sint-Truiden ATZ
	Lateral limits	504836N 0050925E - 504902N 0051151E - 504835N 0051338E - 504657N 0051555E - 504355N 0051545E - 504709N 0050621E - 504836N 0050925E. ⁽¹⁾
2	Vertical limits	2 000 FT AMSL
3	Airspace classification	G ⁽¹⁾⁽²⁾
4	Unit call sign	Brustem Radio ⁽³⁾
	Language(s)	En
5	Transition altitude	4 500 FT AMSL
6	Remarks	(1) EBR61 excl PERM. (2) EBR62 , EBR63 , EBR64 and EBR66 excl. (3) Mandatory two-way radio contact and communication for arriving, departing and crossing traffic. Restrictions due to RPAS and/or balloon activity will be announced by NOTAM and/or "Brustem Radio".

J/ EBST Aerodrome Traffic Zone & EBR61 -> 73: activated by Notam !

EBR61 - SINT-TRUIDEN 1

Lateral limits	Vertical limits	Type of restriction / nature of hazard	Time of activity
504752N 0051121E - 504739N 0051136E - 504731N 0051133E - 504732N 0051113E - 504743N 0051114E - 504752N 0051121E.	1000 FT AMSL / GND	RPAS testing and training zone. Prohibited to non-participating aircraft.	HJ ⁽¹⁾

(1) ACT can be checked with EBST local authorities (see [EBST AD 2.2](#)).

EBR66 - SINT-TRUIDEN 5

Lateral limits	Vertical limits	Type of restriction / nature of hazard	Time of activity
504745N 0051214E - 504802N 0051119E - 504816N 0051207E - 504752N 0051233E - 504745N 0051214E.	550 FT AMSL / GND	RPAS testing and training zone. Prohibited to non-participating aircraft.	activation announced by NOTAM ⁽¹⁾

(1) ACT can be checked with EBST local authorities (see [EBST AD 2.2](#)).

EBR62 - SINT-TRUIDEN 2

Lateral limits	Vertical limits	Type of restriction / nature of hazard	Time of activity
504745N 0051214E - 504722N 0051116E - 504743N 0051113E - 504800N 0051125E - 504803N 0051154E - 504745N 0051214E.	2000 FT AMSL / GND	RPAS testing and training zone. Prohibited to non-participating aircraft.	activation announced by NOTAM ⁽¹⁾

(1) ACT can be checked with EBST local authorities (see [EBST AD 2.2](#)).

EBR72 - SINT-TRUIDEN 6 (NORTH)

Lateral limits	Vertical limits	Type of restriction / nature of hazard	Time of activity
504836N 0050925E - 504902N 0051151E - 504835N 0051338E - 504822N 0051356E - 504622N 0050838E - 504709N 0050621E - 504836N 0050925E.	2000 FT AMSL / GND	RPAS testing and training zone. Prohibited to non-participating aircraft.	activation announced by NOTAM ⁽¹⁾

(1) Activation can be checked with EBST local authorities (see [EBST AD 2.2](#)).

EBR63 - SINT-TRUIDEN 3

Lateral limits	Vertical limits	Type of restriction / nature of hazard	Time of activity
504635N 0050920E - 504632N 0050957E - 504621N 0051026E - 504558N 0050956E - 504617N 0050855E - 504635N 0050920E.	650 FT AMSL / GND	RPAS testing and training zone. Prohibited to non-participating aircraft.	activation announced by NOTAM ⁽¹⁾

(1) ACT can be checked with EBST local authorities (see [EBST AD 2.2](#)).

EBR73 - SINT-TRUIDEN 7 (SOUTH)

Lateral limits	Vertical limits	Type of restriction / nature of hazard	Time of activity
504355N 0051545E - 504622N 0050838E - 504822N 0051356E - 504657N 0051555E - 504355N 0051545E.	2000 FT AMSL / GND	RPAS testing and training zone. Prohibited to non-participating aircraft. Zone allowed for manned traffic when RPAS ACT in EBR72 after coordination with and approved by the Duty Aerodrome Commander (DAC) of EBST. Solo training flights prohibited. Permanent 2-way radio contact with EBST mandatory.	activation announced by NOTAM ⁽¹⁾

(1) Activation can be checked with EBST local authorities (see [EBST AD 2.2](#)).

EBR64 - SINT-TRUIDEN 4

Lateral limits	Vertical limits	Type of restriction / nature of hazard	Time of activity
504836N 0050925E - 504902N 0051151E - 504835N 0051338E - 504657N 0051555E - 504355N 0051545E - 504709N 0050621E - 504836N 0050925E.	2000 FT AMSL / GND	RPAS testing and training zone. Prohibited to non-participating aircraft, except when approved by duty aerodrome commander of EBST.	activation announced by NOTAM ⁽¹⁾

(1) ACT can be checked with EBST local authorities (see [EBST AD 2.2](#)).